



# DISCLOSURE PLAN FOR PROPOSED LOT 2

Proposed Lot 2 is described as part of Lot 71 on RP79881 and situated in Jacobs Well

The Reconfiguration of a Lot application for the proposed lot was approved on the 15th June 2023 on approved plan LC.23014- (Rev A) dated 15/03/23.

### LEGEND

- 0.50m --- Design Fill Depth Contour (0.1m Interval)
- 2.0 --- Design Finished Surface Level Contour (0.05m Interval)
- Design Batter Line
- Design Building Envelope
- For Retaining Wall Construction Detail See Engineering Civil O.P.W. Plans

**Builders Note:**  
Builders shall not build off the design levels shown hereon. A site survey is required. This note is an integral part of this plan.

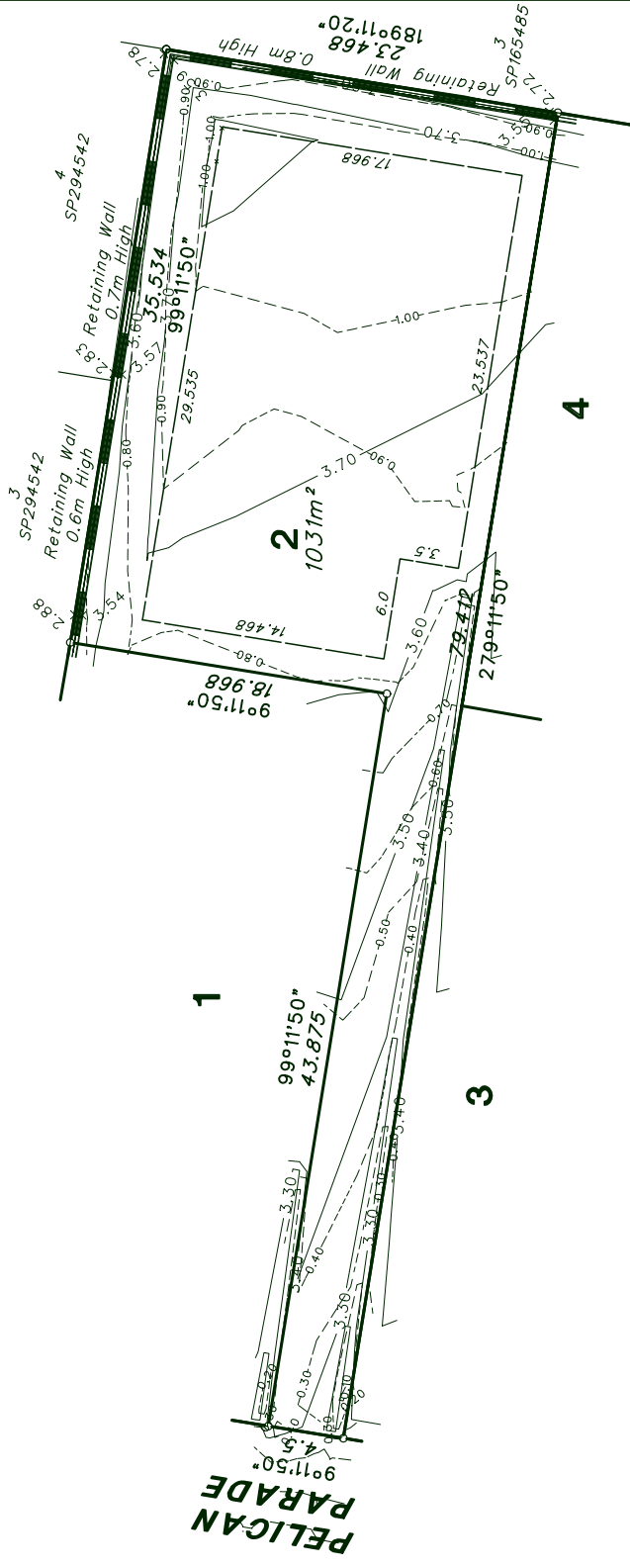
**Engineering Note:**  
Engineering design information supplied by Legend Consultants, March 2023

**Compaction Statement:**  
The earthworks must be carried out in accordance with AS 3798:2007 Guidelines on earthworks for commercial and residential developments. Supervision of bulk earthworks must be to Level 1 and the frequency of field density testing must be in accordance with Table 6.1 of AS 3798:2007.

**Note:**  
This plan has been prepared by Andrews & Hansen P/L, who is registered with the Surveyors Board of Queensland as a Cadastral Surveyor.

**ANDREWS & HANSEN PTY LTD**  
ACN 010 742 784  
**CONSULTING SURVEYORS**  
UNIT 21/39 LAWRENCE DRIVE  
NERANG. QLD. 4211  
PHONE 07-55962150  
FAX 07-55960657

LOCALITY JACOBS WELL	MAP REFERENCE
HEIGHT DATUM AHD D	LOCAL AUTHORITY GOLD COAST CITY COUNCIL
HEIGHT ORIGIN AHD DERIVED FROM PM116813 RL3.228 AHD	SCALE 1:300 (A3)
MERIDIAN MGA	SURVEYOR
CONTOUR INTERVAL SEE NOTE	DRAWN PN 8/01/2024
PLAN NUMBER 17341-DIS-2	REVISION A



**PELICAN PARADE**



# DISCLOSURE PLAN

## FOR PROPOSED LOT 3

Proposed Lot 3 is described as part of Lot 71 on RP79881 and situated in Jacobs Well

The Reconfiguration of a Lot application for the proposed lot was approved on the 15th June 2023 on approved plan LC.23014- (Rev A) dated 15/03/23.

### LEGEND

- 0.50m — Design Fill Depth Contour (0.1m Interval)
- 2.0 — Design Finished Surface Level Contour (0.05m Interval)
- Design Batter Line
- Design Building Envelope
- For Retaining Wall Construction Detail See Engineering Civil O.P.W. Plans

### Builders Note:

Builders shall not build off the design levels shown hereon. A site survey is required. This note is an integral part of this plan.

### Engineering Note:

Engineering design information supplied by Legend Consultants, March 2023

### Compaction Statement:

The earthworks must be carried out in accordance with AS 3798:2007 Guidelines on earthworks for commercial and residential developments. Supervision of bulk earthworks must be to Level 1 and the frequency of field density testing must be in accordance with Table 8.1 of AS 3798:2007.

### Note:

This plan has been prepared by Andrews & Hansen P/L, who is registered with the Surveyors Board of Queensland as a Cadastral Surveyor.

**ANDREWS & HANSEN PTY LTD**

ACN 010 742 784

CONSULTING SURVEYORS

UNIT 21/39 LAWRENCE DRIVE

NERANG, QLD. 4211

PHONE

07-55962150

FAX

07-55960657

LOCALITY

JACOBS WELL

MAP REFERENCE

HEIGHT DATUM

AHD D

LOCAL AUTHORITY

GOLD COAST CITY COUNCIL

HEIGHT ORIGIN

AHD DERIVED FROM PM116813 RL3.228 AHD

SCALE

1:200 (A3)

MERIDIAN

MGA

SURVEYOR

CONTOUR INTERVAL

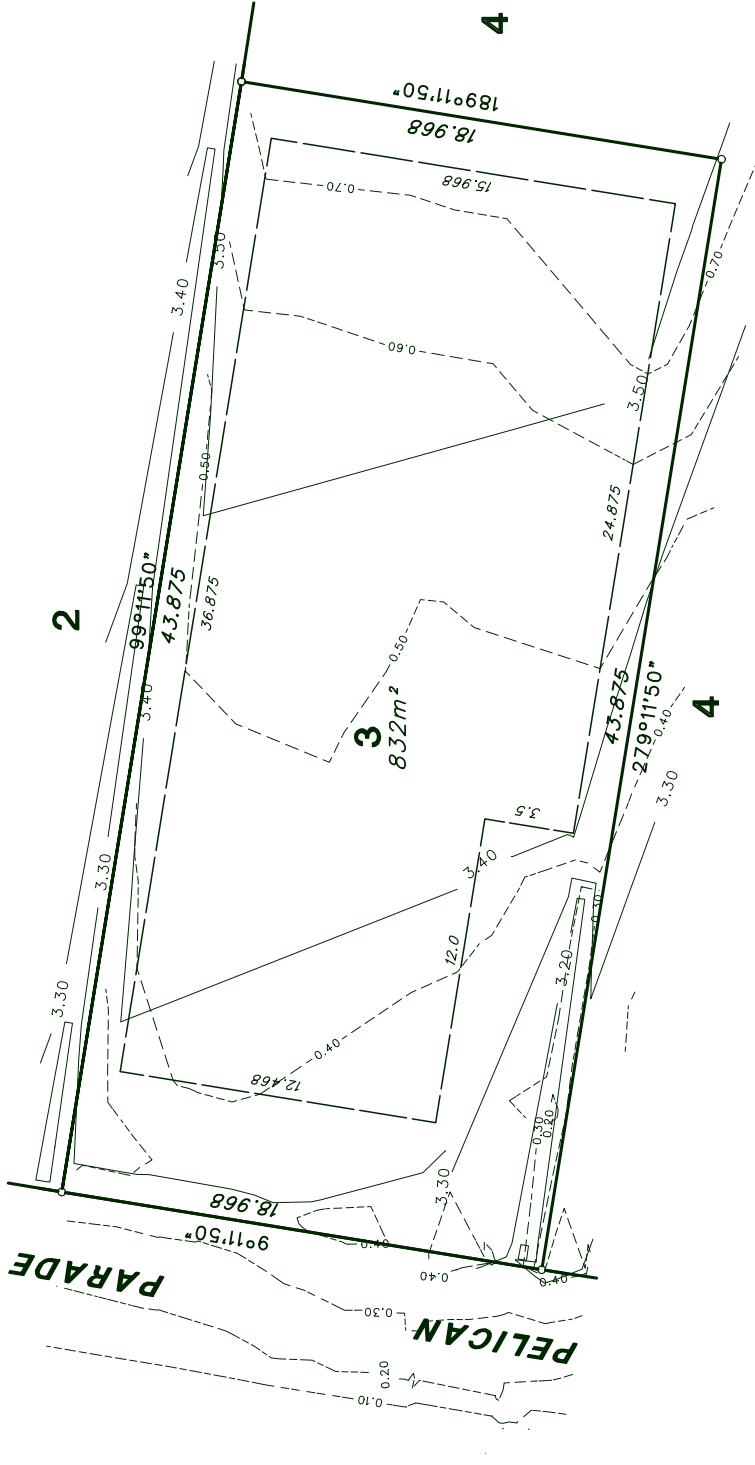
SEE NOTE

PLAN NUMBER

17341-DIS-3

REVISION

A










# DISCLOSURE PLAN

## FOR PROPOSED LOT 5

Proposed Lot 5 is described as part of Lot 71 on RP79881 and situated in Jacobs Well

The Reconfiguration of a Lot application for the proposed lot was approved on the 15th June 2023 on approved plan LC.23014- (Rev A) dated 15/03/23.

### LEGEND

-  Design Fill Depth Contour (0.1m Interval)
-  Design Finished Surface Level Contour (0.05m Interval)
-  Design Batter Line
-  Design Building Envelope
-  For Retaining Wall Construction Detail See Engineering Civil O.P.W. Plans

### Builders Note:

Builders shall not build off the design levels shown hereon. A site survey is required. This note is an integral part of this plan.

### Engineering Note:

Engineering design information supplied by Legend Consultants, March 2023

### Compaction Statement:

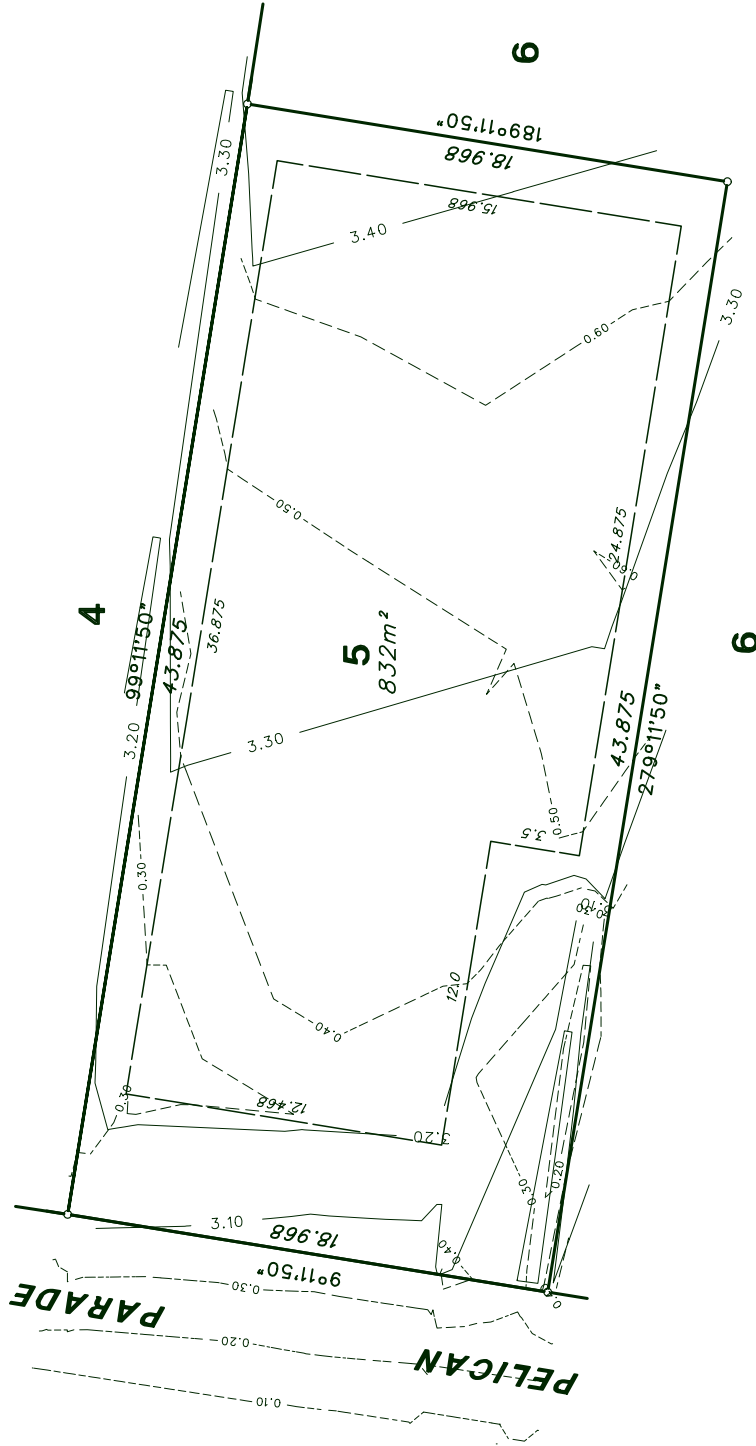
The earthworks must be carried out in accordance with AS 3798-2007 Guidelines on earthworks for commercial and residential developments. Supervision of bulk earthworks must be to Level 1 and the frequency of field density testing must be in accordance with Table 8.1 of AS 3798-2007.

### Note:

This plan has been prepared by Andrews & Hansen P/L, who is registered with the Surveyors Board of Queensland as a Cadastral Surveyor.

**ANDREWS & HANSEN PTY LTD**  
 ACN 010 742 784  
**CONSULTING SURVEYORS**  
 UNIT 21/39 LAWRENCE DRIVE  
 NERANG, QLD. 4211  
 PHONE 07-55962150  
 FAX 07-55960657

LOCALITY JACOBS WELL	MAP REFERENCE
HEIGHT DATUM AHD D	LOCAL AUTHORITY GOLD COAST CITY COUNCIL
HEIGHT ORIGIN AHD DERIVED FROM P1116813 R.3.228.4HDD	SCALE 1:200 (A3)
MGA	SURVEYOR
CONTOUR INTERVAL SEE NOTE	DRAWN PN 8/01/2024
PLAN NUMBER <b>17341-DIS-5</b>	REVISION <b>A</b>



SCALE IN METRES 1 : 200

# DISCLOSURE PLAN FOR PROPOSED LOT 6

Proposed Lot 6 is described as part of Lot 71 on RP79881 and situated in Jacobs Well

The Reconfiguration of a Lot application for the proposed lot was approved on the 15th June 2023 on approved plan LC.23014- (Rev A) dated 15/03/23.

### LEGEND

- 0.80 ——— Design Fill Depth Contour (0.1m Interval)
- 2.0 ——— Design Finished Surface Level Contour (0.05m Interval)
- ||||| Design Batter Line
- Design Building Envelope
- For Retaining Wall Construction Detail See Engineering Civil O.P.W. Plans

**Builders Note:**  
Builders shall not build off the design levels shown hereon. A site survey is required. This note is an integral part of this plan.

**Engineering Note:**  
Engineering design information supplied by Legend Consultants, March 2023

**Compaction Statement:**  
The earthworks must be carried out in accordance with AS 3798-2007 Guidelines on earthworks for commercial and residential developments. Supervision of bulk earthworks must be to Level 1 and the frequency of field density testing must be in accordance with Table 8.1 of AS 3798-2007.

**NOTE:**  
This plan has been prepared by Andrews & Hansen P/L who is registered with the Surveyor's Board of Queensland as a Cadastral Surveyor.

**ANDREWS & HANSEN PTY LTD**  
ACN 010 742 784  
**CONSULTING SURVEYORS**  
UNIT 21/39 LAWRENCE DRIVE  
NERANG, QLD. 4211  
PHONE 07-55962150 FAX 07-55960657

LOCALITY JACOBS WELL	MAP REFERENCE
HEIGHT DATUM AHD D	LOCAL AUTHORITY GOLD COAST CITY COUNCIL
HEIGHT ORIGIN AHD DERIVED FROM PM118813 RL3.228 AHD	SCALE 1:300 (A3)
MERIDIAN MGA	SURVEYOR
CONTOUR INTERVAL SEE NOTE	DRAWN PN 8/01/2024
PLAN NUMBER <b>17341-DIS-6</b>	REVISION <b>A</b>

