

Total Area 4566 m²

Lot 1 518 m²

Lot 2 726 m²
Emt E 32 m²

Lot 3 700 m²
Emt L (Pt) 107 m²

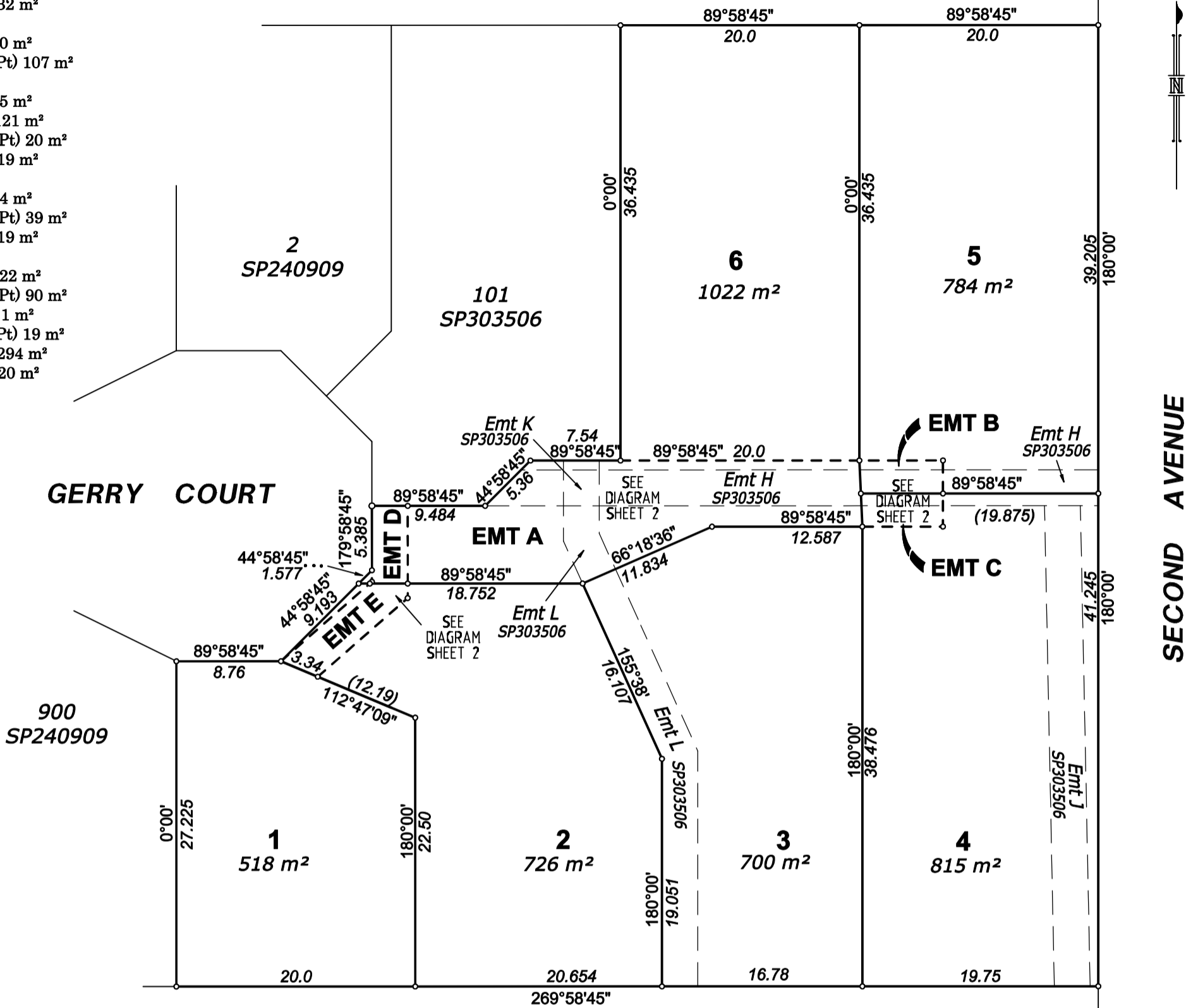
Lot 4 815 m²
Emt J 121 m²
Emt H (Pt) 20 m²
EMT C 19 m²

Lot 5 784 m²
Emt H (Pt) 39 m²
EMT B 19 m²

Lot 6 1022 m²
Emt H (Pt) 90 m²
Emt K 11 m²
Emt L (Pt) 19 m²
EMT A 294 m²
EMT D 20 m²

See Sheet 2 for Table of Reference Marks.
See Sheet 2 for Reinstatement Report

CP
SP258153



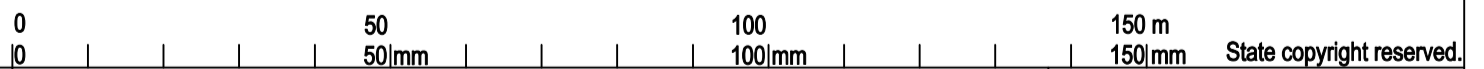
Title: Plan of Lots 1 to 6 and Easements A to C in Lots 6, 5 and 4 respectively.
Page: 1 of 2
Rev: DRAFT
Date: 10/08/2022
Prepared By: Zone Planning

160
RP85473

LOGAN CITY COUNCIL
APPROVED PLAN OF DEVELOPMENT
This is the approved plan of development for Development Application
RL/66/2022

EASEMENT A - Access and Services: Burdening lot 6 and benefitting lots 3, 4 and 5
EASEMENT B - Access and Services: Burdening lot 5 and benefitting lot 4
EASEMENT C - Access and Services: Burdening lot 4 and benefitting lot 5
EASEMENT D - Sewer (Council Standard Terms): Burdening lot 6 and benefitting lots 1 and 2
EASEMENT E - Sewer (Council Standard Terms): Burdening lot 2 and benefitting lot 1

Terms of Easements A, B and C provide access and services for lots 3, 4, 5, and 6 - ongoing maintenance is equally the responsibility and cost of all burdened and benefitted parties. This is to ensure access is retained in a suitable and safe state.



1. This plan has been prepared for the exclusive of WIN Housing Projects only.
2. Alterations beyond the control of the surveyor may be required by the Local Authority or the Department of Resources.
3. The cadastral boundaries shown on this plan have not been examined or reinstated by the surveyor, and as such, they are subject to amendments on final survey.
4. This is plan is in DRAFT format only, and as such, Kaymak Survey will accept no liability for any loss or damage howsoever arising, to any person or corporation who may rely on this plan for any purpose.

Plan of Lots 1 to 6 and Easements A to C in Lots 6, 5 and 4 respectively
Cancelling Lot 102 on SP303506 and Lot 14 on SP240909

Scale: 1 : 400
Format: STANDARD

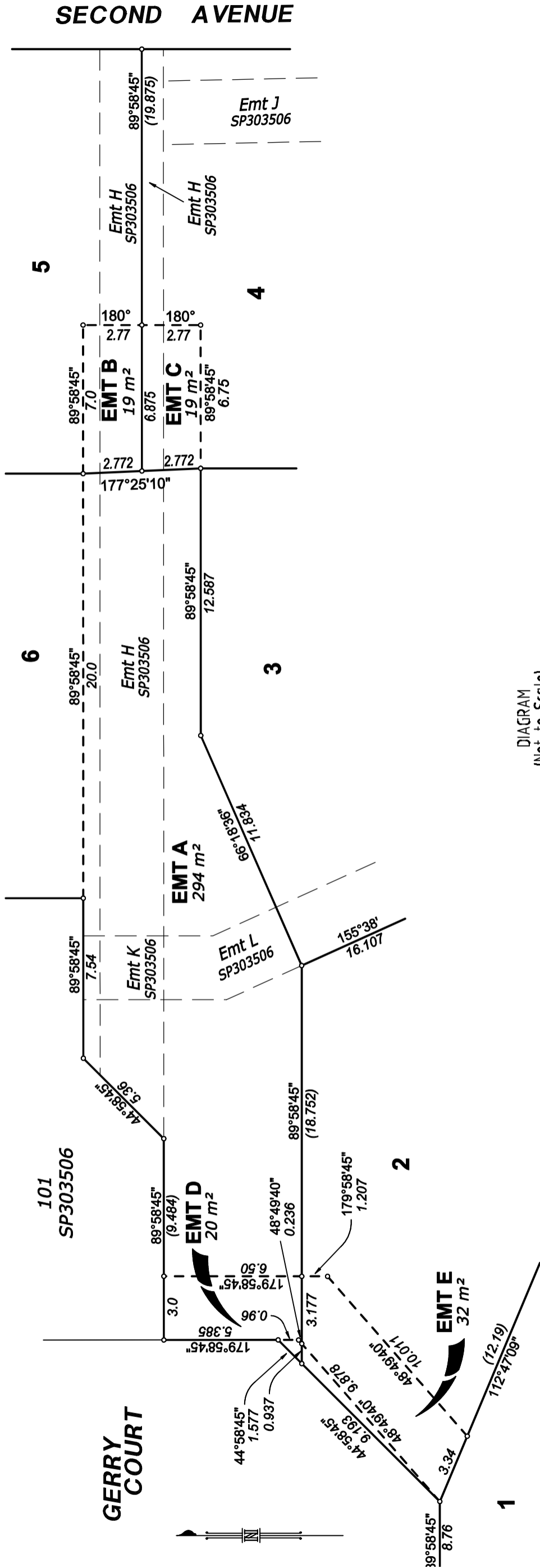
DRAFT

LOCAL GOVERNMENT: Logan City Council

LOCALITY: Marsden

Meridian: SP303506

Survey Records: No



LOGAN CITY COUNCIL
APPROVED PLAN OF DEVELOPMENT
This is the approved plan of development for Development Application
RL/66/2022

Title: Additional Sheet
Page: 2 of 2
Rev: DRAFT
Date: 10/08/2022
Prepared By: Zone Planning

Scale: 1 : 200
State copyright reserved.