

LION  **LAND MARKETING**

Waterford Prestige Estate

23 Patrick Court, Waterford West Qld

**House Plans specially
designed for this Estate.**

*“When you live here, you can leave your car in
the garage and walk to all amenities!”*

LION 
LAND MARKETING

1300 138 185



WATERFORD SANCTUARY

Welcome home!

LOT 1

23 Patrick Court, Waterford West QLD 4133

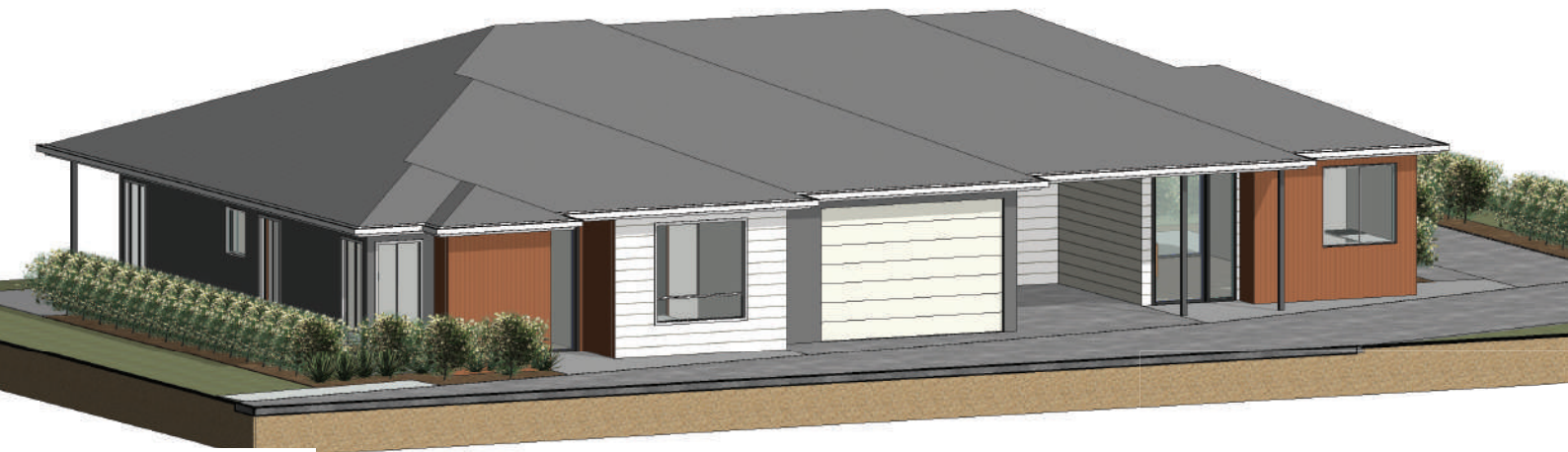
About SDA

Specialist Disability Accommodation (SDA) refers to accommodation that may be funded under the National Disability Insurance Scheme (NDIS) for eligible participants who have an extreme functional impairment or very high support needs.

Through development of SDA, the NDIS have sought to create an objective that ensures that all people with disabilities have the same rights as any other member of

Australian society. This is done by enabling independence, social participation and exercising control and choice, in matters that affect their life i.e. the house in which they reside.

The design standards have been crafted with the intention of improving the lives of participants. They do this by assisting participants to live in a home that meets their individual needs. The homes are situated in communities that facilitate social connections, which helps to create a sense of belonging.



FLOOR AREAS:

MAIN HOME

Living = 148.62M2
Alfresco = 19.07M2
Total = 167.69M2

VILLA

Living = 61.47M2
Alfresco = 13.18M2
Carport = 21.64M2
Total = 91.52M2





WATERFORD SANCTUARY

Welcome home!

LOT 4

23 Patrick Court, Waterford West QLD 4133

About SDA

Specialist Disability Accommodation (SDA) refers to accommodation that may be funded under the National Disability Insurance Scheme (NDIS) for eligible participants who have an extreme functional impairment or very high support needs.

Through development of SDA, the NDIS have sought to create an objective that ensures that all people with disabilities have the same rights as any other member of

Australian society. This is done by enabling independence, social participation and exercising control and choice, in matters that affect their life i.e. the house in which they reside.

The design standards have been crafted with the intention of improving the lives of participants. They do this by assisting participants to live in a home that meets their individual needs. The homes are situated in communities that facilitate social connections, which helps to create a sense of belonging.





WATERFORD SANCTUARY

Welcome home!

LOT 7

23 Patrick Court, Waterford West QLD 4133

About SDA

Specialist Disability Accommodation (SDA) refers to accommodation that may be funded under the National Disability Insurance Scheme (NDIS) for eligible participants who have an extreme functional impairment or very high support needs.

Through development of SDA, the NDIS have sought to create an objective that ensures that all people with disabilities have the same rights as any other member of Australian society. This is done by enabling independence, social participation and exercising control and choice, in matters that affect their life i.e. the house in which they reside.

The design standards have been crafted with the intention of improving the lives of participants. They do this by assisting participants to live in a home that meets their individual needs. The homes are situated in communities that facilitate social connections, which helps to create a sense of belonging.



Unit 1 Floor Area:

Habitable = 75.86M2
Alfresco = 17.87M2
TOTAL = 93.73M2

Unit 2 Floor Area:

Habitable = 79.22M2
Alfresco = 17.33M2
TOTAL = 96.55M2

Unit 3 Floor Area:

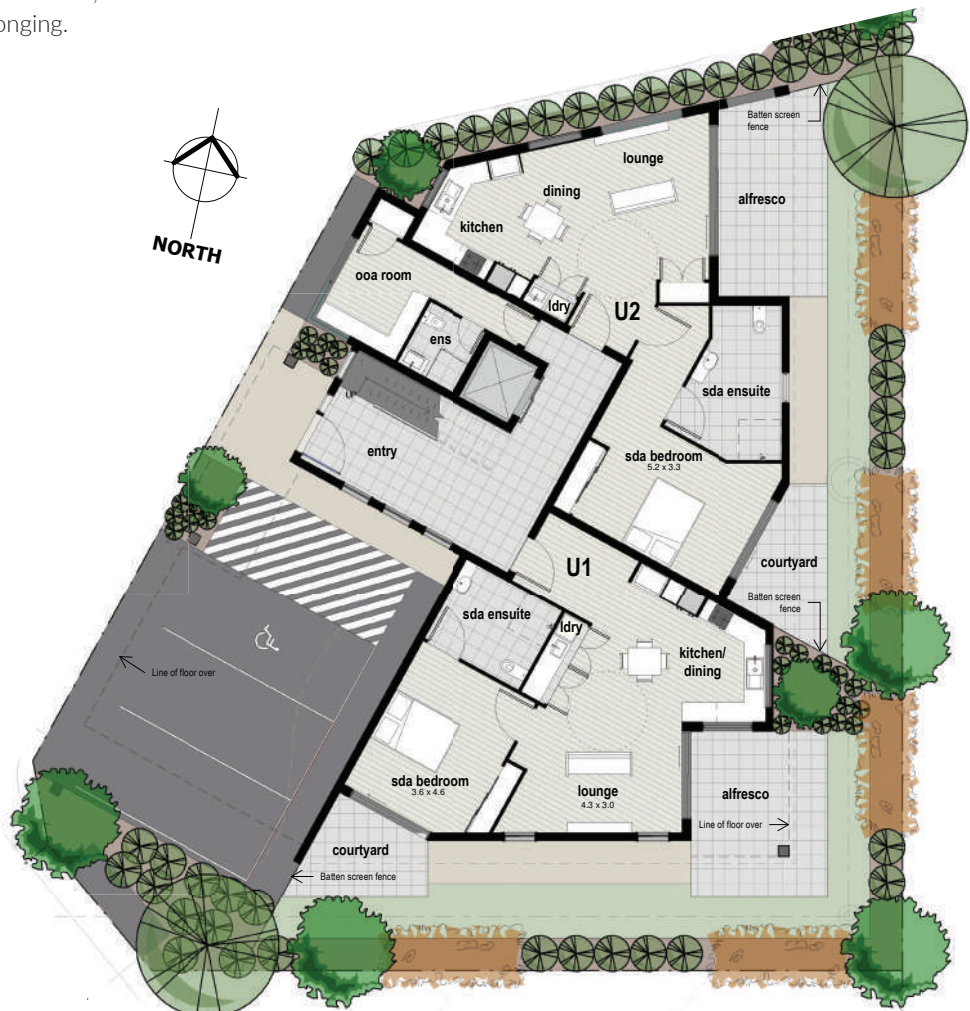
Habitable = 70.74M2
Alfresco = 13.99M2
TOTAL = 84.73M2

Unit 4 Floor Area:

Habitable = 75.86M2
Alfresco = 9.74M2
TOTAL = 85.60M2

Unit 5 Floor Area:

Habitable = 98.00M2
Alfresco = 11.12M2
TOTAL = 109.12M2





WATERFORD SANCTUARY

Welcome home!

LOT 8

23 Patrick Court, Waterford West QLD 4133

About SDA

Specialist Disability Accommodation (SDA) refers to accommodation that may be funded under the National Disability Insurance Scheme (NDIS) for eligible participants who have an extreme functional impairment or very high support needs.

Through development of SDA, the NDIS have sought to create an objective that ensures that all people with disabilities have the same rights as any other member of

Australian society. This is done by enabling independence, social participation and exercising control and choice, in matters that affect their life i.e. the house in which they reside.

The design standards have been crafted with the intention of improving the lives of participants. They do this by assisting participants to live in a home that meets their individual needs. The homes are situated in communities that facilitate social connections, which helps to create a sense of belonging.



FLOOR AREAS:

MAIN HOME

Living = 124.71M2
 Alfresco = 15.48M2
 Garage = 31.78M2
 Total = 171.97M2

VILLA

Living = 60.16M2
 Alfresco = 5.99M2
 Garage = 24.29M2
 Total = 90.44M2

