

LOT LAYOUT PLAN

CONTINUES DWG SC12-0071-C102

CONTINUES DWG SC12-0071-C101

LEGEND

- COURTYARD LOT
- TRADITIONAL LOT
- ROAD RESERVE
- DRAINAGE RESERVE
- 9m x 15m BUILDING ENVELOPE
- STAGE BOUNDARY

ENGINEERING CERTIFICATION  
 AS REGISTERED PROFESSIONAL ENGINEER FOR THIS PROJECT, I CERTIFY THAT THE WORKS DETAILED ON THIS DRAWING ARE IN ACCORDANCE WITH CURRENT ENGINEERING PRACTICE AND COMPLY WITH THE RELEVANT CURRENT AUSTRALIAN STANDARDS

SIGNED: *K. Howells* NAME: KEITH HOWELLS  
 RPEQ NO: 7295  
 DATE: 08-11-17



REV	DATE	REVISION DETAILS	APPROVED
G	22.05.15	ISSUED FOR INFORMATION	SC
F	19.11.14	AMENDED TO SUIT TREE RETENTION	SC
1	08.11.17	REISSUED FOR CONSTRUCTION	KPH
0	01.04.16	ISSUED FOR CONSTRUCTION	SC
I	02.11.15	ISSUED FOR INFORMATION	SC
H	31.08.15	ISSUED FOR APPROVAL	SC

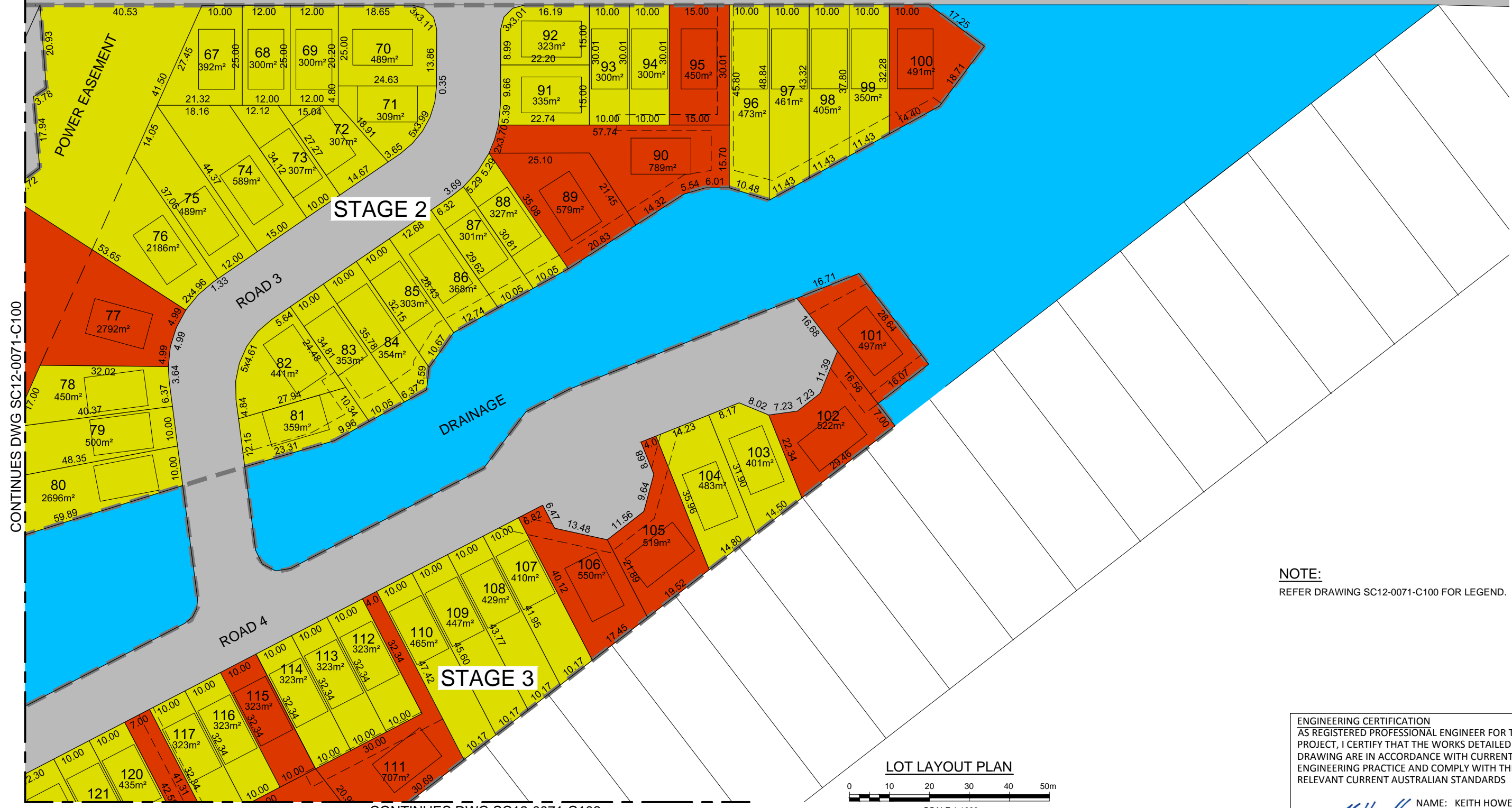


A3 THE SCALE SHOWN IS ORIGINAL DRAWING SCALE  
 COPYRIGHT © 2015 O2 ENVIRONMENTAL PTY LTD  
 THIS DOCUMENT MAY NOT BE COPIED OR TRANSMITTED IN ANY FORM OR BY ANY MEANS IN PART OR IN WHOLE WITHOUT THE WRITTEN CONSENT OF O2 ENVIRONMENTAL PTY LTD.

DRAWN	DCD	CLIENT
DESIGNED	DCD	SIENNA EDEN PTY LTD
APPROVED	KPH	PROJECT
DATE	MAR 15	RESIDENTIAL DEVELOPMENT
RPEQ NO.	AHD	MULLINS STREET, REDBANK PLAINS
GRID REF.		

TITLE	DRAWING NO.	REV.
LOT LAYOUT PLAN SHEET 1 OF 3	SC12-0071-C100	1

GARLAND STREET



STAGE 2

STAGE 3

**NOTE:**  
REFER DRAWING SC12-0071-C100 FOR LEGEND.

ENGINEERING CERTIFICATION  
AS REGISTERED PROFESSIONAL ENGINEER FOR THIS PROJECT, I CERTIFY THAT THE WORKS DETAILED ON THIS DRAWING ARE IN ACCORDANCE WITH CURRENT ENGINEERING PRACTICE AND COMPLY WITH THE RELEVANT CURRENT AUSTRALIAN STANDARDS

SIGNED: *K. Howells* NAME: KEITH HOWELLS  
RPEQ NO: 7295  
DATE: 08-11-17

LOT LAYOUT PLAN



SCALE 1:1000

**O2 ENVIRONMENT+ ENGINEERING**  
ACN: 136 340 924 | ABN: 79 136 340 924  
SUNSHINE COAST BRISBANE  
8 Gravel Street 490 Boundary Street  
Peregian Beach, QLD, 4566 Spring Hill, QLD, 4000  
t (07) 5448 3288 t (07) 3339 7900

REV	DATE	REVISION DETAILS	APPROVED
G	19.11.14	AMENDED TO SUIT TREE RETENTION	SC
1	08.11.17	REISSUED FOR CONSTRUCTION	KPH
0	01.04.16	ISSUED FOR CONSTRUCTION	SC
J	02.11.15	ISSUED FOR INFORMATION	SC
I	31.08.15	ISSUED FOR APPROVAL	SC
H	22.05.15	ISSUED FOR INFORMATION	SC



A3 THE SCALE SHOWN IS ORIGINAL DRAWING SCALE  
COPYRIGHT © 2015 O2 ENVIRONMENTAL PTY LTD  
THIS DOCUMENT MAY NOT BE COPIED OR TRANSMITTED IN ANY FORM OR BY ANY MEANS IN PART OR IN WHOLE WITHOUT THE WRITTEN CONSENT OF O2 ENVIRONMENTAL PTY LTD.

DRAWN	DCD
DESIGNED	DCD
APPROVED	KPH
DATE	MAR 15
RPEQ NO.	
GRID REF.	AHD

CLIENT	SIENNA EDEN PTY LTD
PROJECT	RESIDENTIAL DEVELOPMENT MULLINS STREET, REDBANK PLAINS

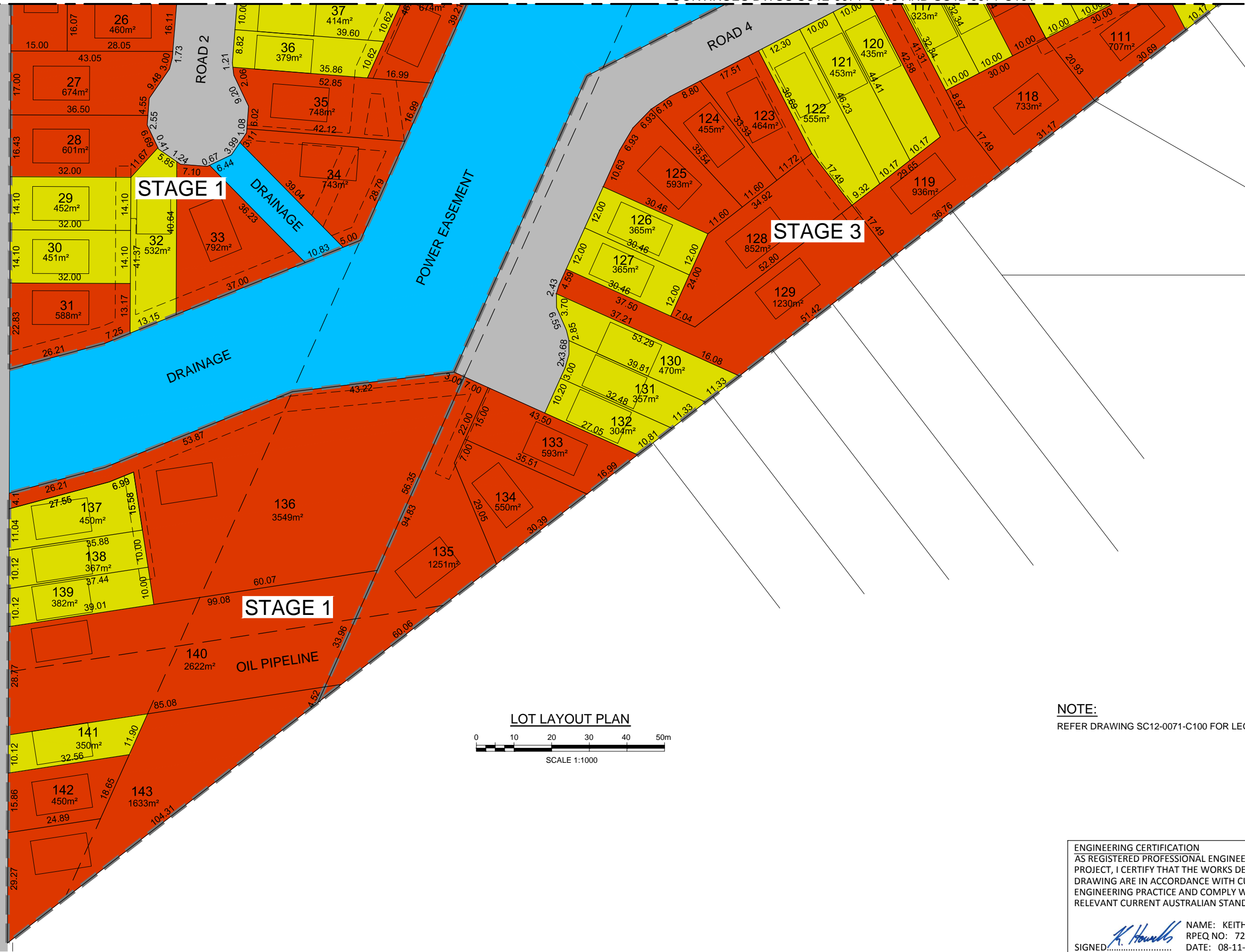
TITLE	LOT LAYOUT PLAN SHEET 2 OF 3
DRAWING NO.	SC12-0071-C101
REV.	1

CONTINUES DWG SC12-0071-C100

CONTINUES DWG SC12-0071-C102

Wednesday, 8 November 2017 1:07:03 PM

MULLINS STREET (SOUTH)

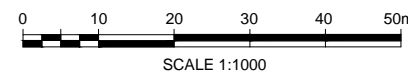


STAGE 1

STAGE 3

STAGE 1

LOT LAYOUT PLAN



**NOTE:**  
REFER DRAWING SC12-0071-C100 FOR LEGEND.

ENGINEERING CERTIFICATION  
AS REGISTERED PROFESSIONAL ENGINEER FOR THIS PROJECT, I CERTIFY THAT THE WORKS DETAILED ON THIS DRAWING ARE IN ACCORDANCE WITH CURRENT ENGINEERING PRACTICE AND COMPLY WITH THE RELEVANT CURRENT AUSTRALIAN STANDARDS

SIGNED: *K. Howells* NAME: KEITH HOWELLS  
RPEQ NO: 7295  
DATE: 08-11-17

**O2 ENVIRONMENT+ ENGINEERING**  
ACN: 136 340 924 | ABN: 79 136 340 924  
SUNSHINE COAST BRISBANE  
8 Greber Street 490 Boundary Street  
Peregian Beach, QLD, 4566 Spring Hill, QLD, 4000  
t (07) 5448 3288 t (07) 3339 7900

REV	DATE	REVISION DETAILS	APPROVED
G	31.08.15	ISSUED FOR APPROVAL	SC
F	22.05.15	ISSUED FOR INFORMATION	SC
E	19.11.14	AMENDED TO SUIT TREE RETENTION	SC
1	08.11.17	REISSUED FOR CONSTRUCTION	KPH
0	01.04.16	ISSUED FOR CONSTRUCTION	SC
H	02.11.15	ISSUED FOR INFORMATION	SC



A3 THE SCALE SHOWN IS ORIGINAL DRAWING SCALE  
COPYRIGHT © 2015 O2 ENVIRONMENTAL PTY LTD  
THIS DOCUMENT MAY NOT BE COPIED OR TRANSMITTED IN ANY FORM OR BY ANY MEANS IN PART OR IN WHOLE WITHOUT THE WRITTEN CONSENT OF O2 ENVIRONMENTAL PTY LTD.

DRAWN	DCD	CLIENT
DESIGNED	DCD	SIENNA EDEN PTY LTD
APPROVED	KPH	PROJECT
DATE	MAR 15	RESIDENTIAL DEVELOPMENT
RPEQ NO.		MULLINS STREET, REDBANK PLAINS
GRID REF.	AHD	

TITLE	DRAWING NO.	REV.
LOT LAYOUT PLAN SHEET 3 OF 3	SC12-0071-C102	1

Wednesday, 8 November 2017 1:07:03 PM